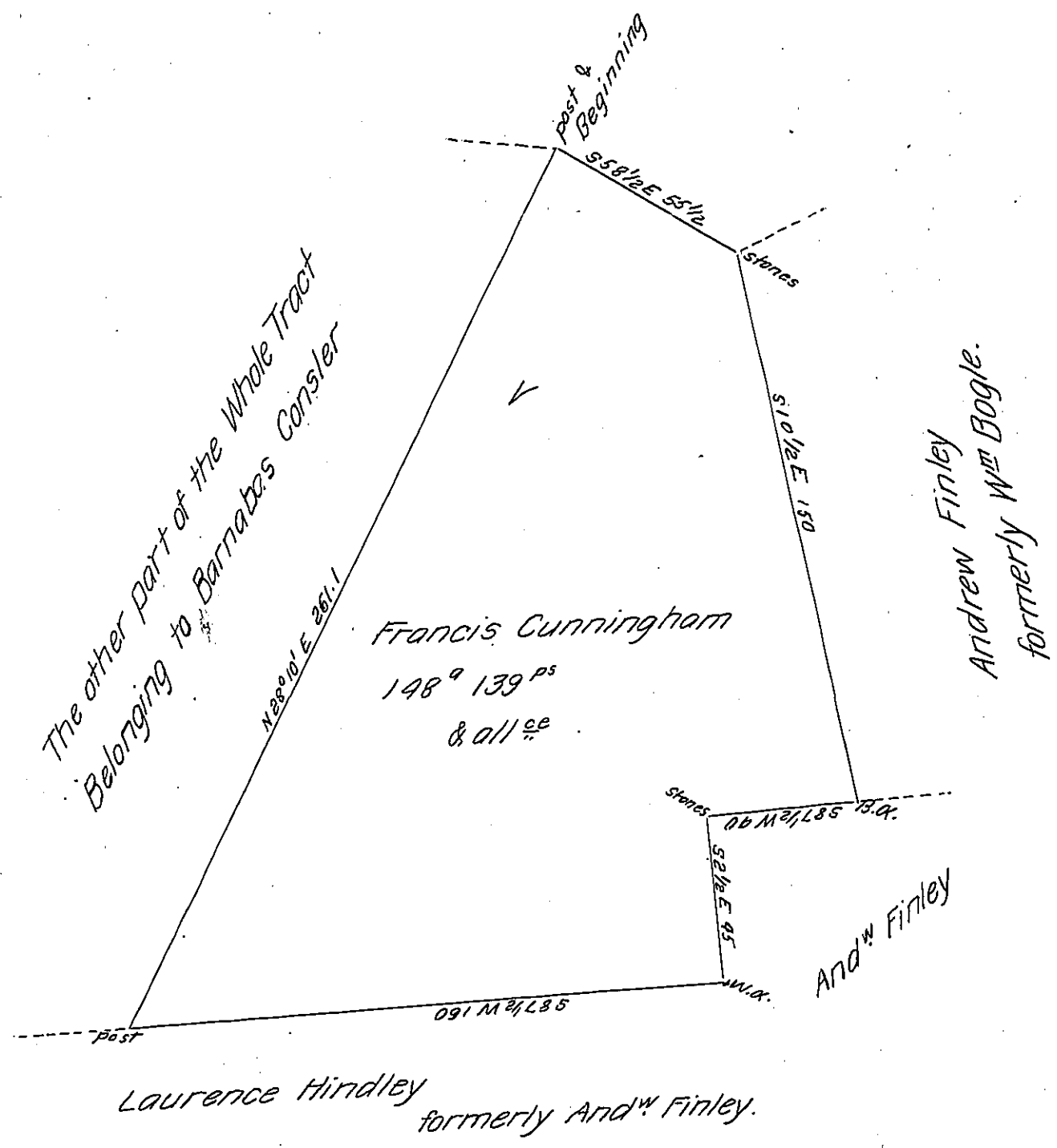


FORM No. 1.



Situate formerly in Shrewsbury Township (but now in Hopewell Township in the County of York, Containing as above set forth 148<sup>a</sup> & 139 Perches and allowance &<sup>s</sup> Being part of a larger Tract of Land Originally Surveyed by William Matthews late D.S. on the 16<sup>th</sup> of the 11<sup>th</sup> mo. 1769, In Pursuance of an application Granted to Francis Cunningham N<sup>o</sup> 3808, for 250<sup>a</sup> dated the 2<sup>d</sup> day of June A.D. 1767, Resurveyed and divided off from the said larger Tract of Land on the 21<sup>st</sup> day of March 1806. And now at the request of the Present owner Frederick Fenus Lam desired to make return of the draught, as Calculated, Examined, and Corrected the 19<sup>th</sup> day of July A.D. 1809.

To Andrew Porter Esq<sup>r</sup>  
 Surveyor General  
 Lancaster P<sup>a</sup>

Per  
 Jacob Spangler D.S.

IN TESTIMONY that the above is a copy of the original remaining on file in the Department of Internal Affairs of Pennsylvania, made conformably to an Act of Assembly approved the 16th day of February 1833, I have hereunto set my hand and caused the Seal of said Department to be affixed at Harrisburg, this seventh day of March 1907

*Laac R. Brown*  
 Secretary of Internal Affairs.